

## AGENDA

**Meeting:** PEWSEY AREA BOARD  
**Place:** Pewsey Vale School, Wilcot Rd, Pewsey SN9 5EW  
**Date:** Monday 11 March 2013  
**Time:** 7.00 pm

---

Including the Parishes of Alton, Beechingstoke, Burbage, Buttermere, Charlton and Wilsford, Chirton and Connock, Easton, Grafton, Great Bedwyn, Ham, Little Bedwyn, Manningford, Marden, Milton Lilbourne, North Newnton, Patney, Pewsey, Rushall, Shalbourne, Stanton St Bernard, Upavon, Wilcot, Huish and Oare, Woodborough, Wootton Rivers

---

**The Area Board welcomes and invites contributions from members of the public. The chairman will try to ensure that everyone who wishes to speak will have the opportunity to do so.**

If you have any requirements that would make your attendance at the meeting easier, please contact your Democratic Services Officer.

**Refreshments and networking opportunities will be available from 6:30pm.**

---

Please direct any enquiries on this Agenda to Sharon Smith (Democratic Services Officer), on 01225 718378 or email [sharonL.smith@wiltshire.gov.uk](mailto:sharonL.smith@wiltshire.gov.uk)  
Or Caroline Brailey (Pewsey Community Area Manager) 01225 718609 or email [caroline.brailey@wiltshire.gov.uk](mailto:caroline.brailey@wiltshire.gov.uk)

All the papers connected with this meeting are available on the Council's website at [www.wiltshire.gov.uk](http://www.wiltshire.gov.uk)

Press enquiries to Communications on direct lines (01225) 713114 / 713115.

---

### Wiltshire Councillors

Robert Hall	Pewsey Vale
Jerry Kunkler ( <b>Chairman</b> )	Pewsey
Stuart Wheeler ( <b>Vice Chairman</b> )	Burbage + Bedwyns

***Map enclosed at page 1***

	<b>Items to be considered</b>	<b>Time</b>					
1	<b>Welcome and Introductions</b>	<b>7:00 pm</b>					
2	<b>Apologies for Absence</b>						
3	<b>Minutes (Pages 3 - 14)</b>  To confirm the minutes of the meeting held on 14 January 2013.						
4	<b>Declarations of Interest</b>  To receive any declarations of disclosable interests or dispensations granted by the Standards Committee.	<b>7:05 pm</b>					
5	<b>Pewsey Vale School Introduction</b>  Steve Hartley, Chair of Governors, and Carol Grant, Headteacher, Pewsey Vale School, will give a short presentation on the achievements of the school over recent years as well as plans for the future.						
6	<b>Chairman's Announcements</b>						
	<b>6a Current Consultations</b>	<b>7:10 pm</b>					
	To note that information on the following current consultations can be found via the following link:						
	<a href="http://www.wiltshire.gov.uk/council/consultations.htm">http://www.wiltshire.gov.uk/council/consultations.htm</a>						
	<table border="1"> <thead> <tr> <th data-bbox="459 1355 882 1388"><b>Consultation</b></th> <th data-bbox="882 1355 1072 1388"><b>End Date</b></th> </tr> </thead> <tbody> <tr> <td data-bbox="459 1388 882 1500">Draft Contaminated Land Supplementary Planning Document</td> <td data-bbox="882 1388 1072 1500">2 April 13</td> </tr> <tr> <td data-bbox="459 1500 882 1579">Review of Wiltshire's Housing Allocations Policy</td> <td data-bbox="882 1500 1072 1579">26 April 13</td> </tr> </tbody> </table>	<b>Consultation</b>	<b>End Date</b>	Draft Contaminated Land Supplementary Planning Document	2 April 13	Review of Wiltshire's Housing Allocations Policy	26 April 13
<b>Consultation</b>	<b>End Date</b>						
Draft Contaminated Land Supplementary Planning Document	2 April 13						
Review of Wiltshire's Housing Allocations Policy	26 April 13						
7	<b>Partner Updates</b>						
	To receive any updates from partner organisations:						
	7a <b>Wiltshire Police</b>						
	7b <b>Wiltshire Fire and Rescue Service (Pages 15 - 16)</b>						
	7c <b>NHS Wiltshire (Pages 17 - 18)</b>						
	7d <b>Pewsey Community Area Partnership</b>						

7e	<b>Parish Councils</b> ( <i>Pages 19 - 22</i> )	
7f	<b>Pewsey Youth Advisory Group (YAG)</b> ( <i>Pages 23 - 24</i> )	
7g	<b>Pewsey Campus - Shadow Community Operations Board</b> ( <i>Pages 25 - 26</i> )	
7h	<b>Wiltshire Involvement Network (WIN)</b>	
7i	<b>Good Neighbour Scheme</b>	
8	<b>Neighbourhood Planning</b>	<b>7:20 pm</b>
	Georgina Clampitt-Dix, Head of Spatial Planning, will be in attendance to give a brief overview on Neighbourhood Planning in the Pewsey Community Area.	
9	<b>Pewsey Area Youth Council - Skate Park</b>	<b>7:40 pm</b>
	A presentation will be made by the Pewsey Area Youth Council.	
10	<b>Pewsey Area Carnival</b> ( <i>Pages 27 - 30</i> )	<b>8:00 pm</b>
	Bernie Bradshaw, Chairman of the Carnival Committee, will present information on the Pewsey Area Carnival.	
11	<b>Area Board Achievements</b> ( <i>Pages 31 - 32</i> )	<b>8:15 pm</b>
	An opportunity to look back at some of the achievements of the Area Board over the last 4 years.	
12	<b>Youth Funding</b> ( <i>Pages 33 - 36</i> )	<b>8:20 pm</b>
	To consider the following Youth Funding requests.	
	<ul style="list-style-type: none"> <li>• Great Bedwyn Youth Club are seeking £140 for a pottery workshop</li> <li>• Great Bedwyn Youth Club are seeking £600 for miscellaneous transport and trips.</li> <li>• Savernake Forest Scout Group are seeking £1,000 for a Cooking Under Canvass project.</li> </ul>	
13	<b>Community Area Transport Group (CATG)</b> ( <i>Pages 37 - 42</i> )	<b>8:40 pm</b>
	The notes of the CATG meeting held on 23 January 2013 are attached. The Board is asked to consider the notes and endorse any recommendations arising.	
14	<b>Community Issues</b> ( <i>Pages 43 - 44</i> )	<b>8:45 pm</b>
	Councillor Stuart Wheeler will give an update on the progress made regarding issues which have been raised with the Area Board.	

15 **Urgent Business**

**8:50 pm**

Time permitting, the Chairman will invite questions and comments on issues not covered elsewhere in the agenda.

16 **Future Meeting Dates and Close** (*Pages 45 - 46*)

To note the Forward Plan attached.

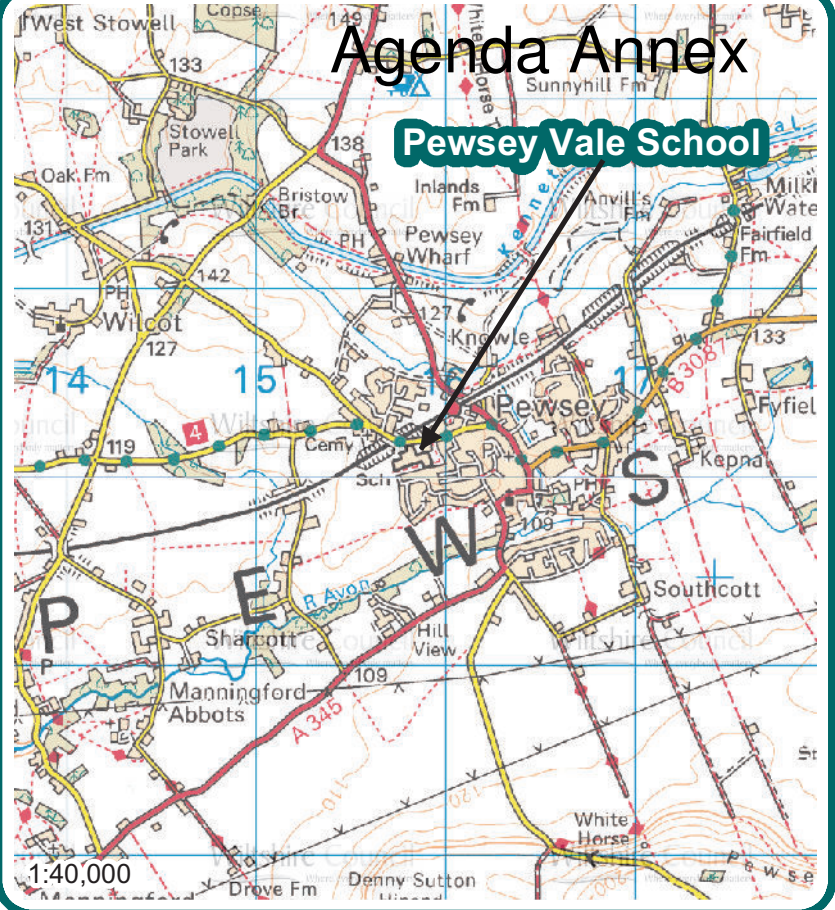
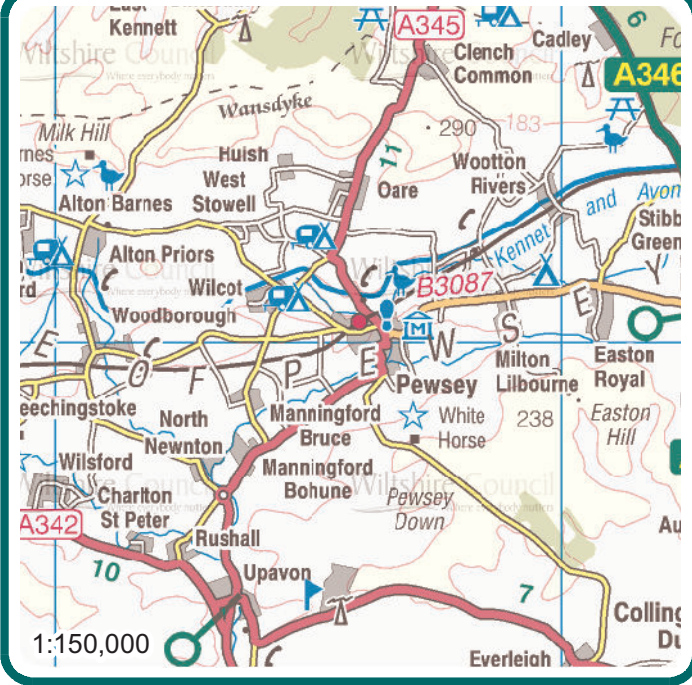
The next meeting of the Pewsey Area Board is scheduled for Monday 8 July, 7pm at Coronation Hall, The Green, East Grafton SN8 3DB.

This page is intentionally left blank

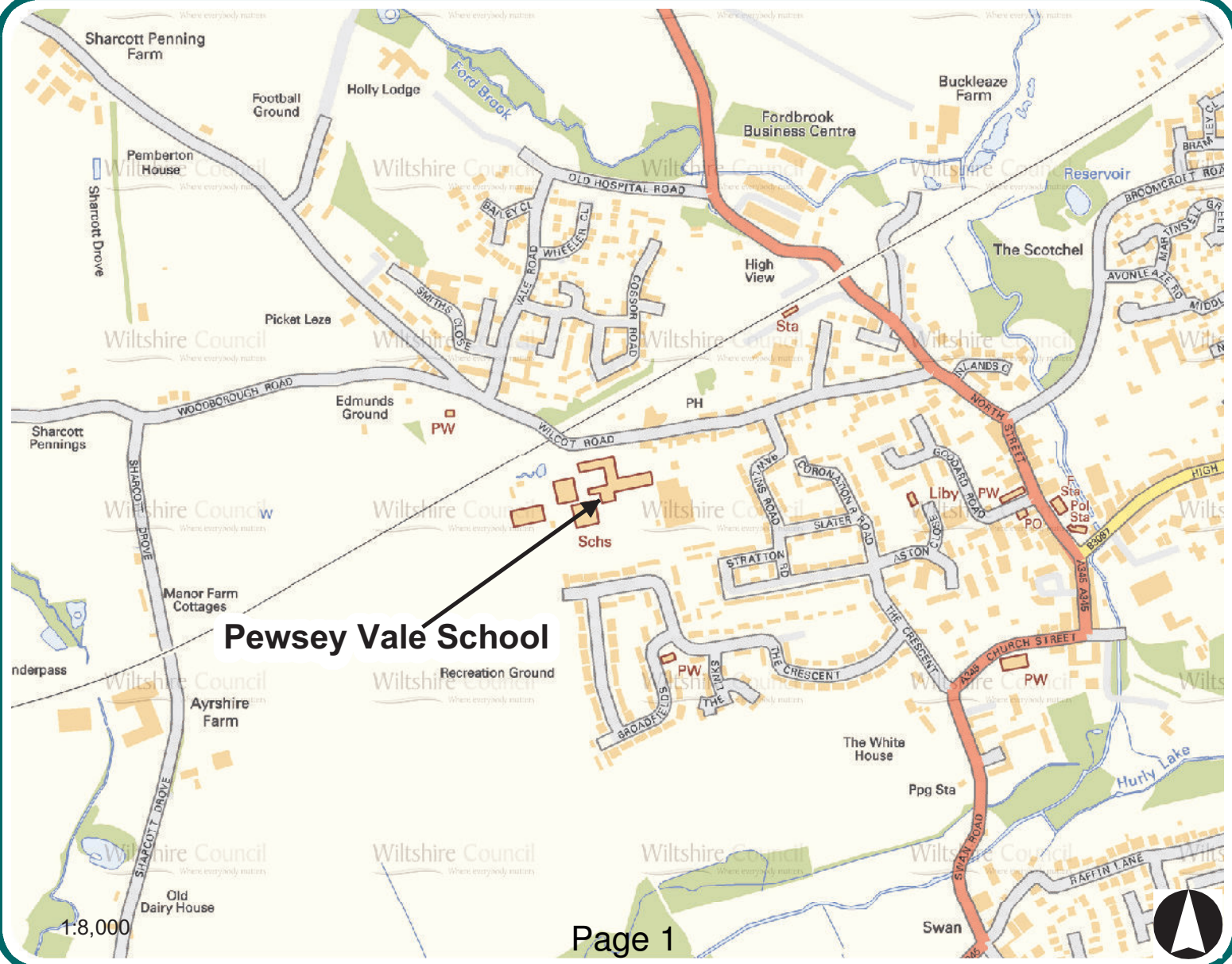


# Agenda Annex

**Pewsey Vale School**



**Pewsey Vale School**  
Wilcot Road  
Pewsey  
Wiltshire  
SN9 5EW



This page is intentionally left blank



# MINUTES

**Meeting:** PEWSEY AREA BOARD  
**Place:** Burbage Village Hall, Eastcourt Road, Burbage, Wiltshire SN8 3AJ  
**Date:** 14 January 2013  
**Start Time:** 7.00 pm  
**Finish Time:** 9.05 pm

---

Please direct any enquiries on these minutes to:

Sharon Smith (Democratic Services Officer), Tel: 01225 718378 or (e-mail) [sharonL.smith@wiltshire.gov.uk](mailto:sharonL.smith@wiltshire.gov.uk)

Papers available on the Council's website at [www.wiltshire.gov.uk](http://www.wiltshire.gov.uk)

---

## **In Attendance:**

### **Wiltshire Councillors**

Cllr Jerry Kunkler (Chairman), Cllr Stuart Wheeler (Vice Chairman) and Cllr Brigadier Robert Hall

### **Wiltshire Council Officers**

Caroline Brailey, Pewsey Community Area Manager  
Ian Gibbons, Service Director Law and Governance  
Sharon L Smith, Democratic Services Officer  
Donna Mountford, Communications Officer  
Maggie Rae (Corporate Director of Public Health and Public Protection), Corporate Director with Statutory Responsibilities for Services delivering Adult Social Care and Public Health  
Kevin Sweeney, Operations Manager, Youth Development Service  
Karen Brown, Pewsey Youth Development Centre

### **Parish Councils**

Alton Parish Council – Stephen Hepworth  
Chirton and Conock Parish Council – Stef Robertson  
Easton Parish Council – Hew Helps, Ray Choules  
Grafton Parish Council – Tom Hatfield, Susie Brew  
Manningford Parish Council – Bernard Gaskin  
Milton Lilbourne Parish Council – Paul Oatway  
Pewsey Parish Council – Peter Deck, Simon Shaw, Bob Woodward, Curly Haskell, Brian Tubb

Rushall Parish Council – Colin Gale  
Shalbourne Parish Council – Stella Zweck, Peter Blanthorn  
Upavon Parish Council – Jon Mulroy  
Woodborough Parish Council – Jim Fletcher

**Partners**

Wiltshire Police – Matt Armstrong  
Police and Crime Commissioner – Angus Macpherson  
Wiltshire Fire and Rescue – Mike Franklin  
Pewsey Community Area Partnership (PCAP) – Stef Robertson  
Pewsey Vale School – Carol Grant, Terry Eyles, Steve Hartley  
Pewsey Campus Team – Bob Woodward, Curly Haskell  
Wiltshire Involvement Network (WIN) – Pat Putland

**Total in attendance: 55**

---

<u>Agenda Item No.</u>	<u>Summary of Issues Discussed and Decision</u>
1	<p><u>Welcome and Introductions</u></p> <p>The Chairman welcomed everyone to the meeting and introduced the Area Board Members and officers.</p>
2	<p><u>Apologies for Absence</u></p> <p>Apologies for absence had been received from:</p> <p>Carolyn Whitler (North Newton Parish Council), Richard Netherclift (Manningford Parish Council) and Bob King (PCAP).</p>
3	<p><u>Minutes</u></p> <p><b><u>Decision</u></b>  <b>The minutes of the meeting held on 12 November 2012 were agreed as a correct record and signed by the Chairman.</b></p>
4	<p><u>Declarations of Interest</u></p> <p>There were no declarations of interest.</p>
5	<p><u>Chairman's Announcements</u></p> <p>The following announcements were noted:</p> <p>Wiltshire Online: Connectivity and Provision  Legacy for Wiltshire  Current consultation</p> <p>In highlighting the 'Legacy for Wiltshire' announcement, attendees were asked to note that the event dates detailed had been changed in part due to the recent weather conditions and were now as follows:</p> <p>Thursday 31 January – County Hall, Trowbridge  Thursday 7 February – Town Hall, Chippenham  Thursday 21 February – Guild Hall, Salisbury  Wednesday 27 February – Corn Exchange, Devizes</p> <p>As advised, the meetings are scheduled to start at 6:30pm with tea and cakes available from 6pm.</p>
6	<p><u>Partner Updates</u></p>
6.1.	<p><u>Wiltshire Police</u></p>

	<p>Inspector Matthew Armstrong referred the meeting to the written update in the agenda and confirmed that the man arrested for burglary and robbery offences had now received an 8 year prison sentence.</p> <p>Ensuing discussion included a request from Milton Lilbourne Parish Council that thanks be given to Teresa Herbert for all her hard work. The proposed streetwatch scheme in Pewsey was also raised with clarification provided that Inspector Matthew Armstrong would investigate what was happening.</p>
6.2.	<p><u>Wiltshire Fire and Rescue Service</u></p> <p>Mike Franklin of Wiltshire Fire and Rescue referred the meeting to the written update contained within the agenda pack and the update for December as circulated at the meeting.</p> <p>Clarification was provided that the Fire Authority would be happy to assist Parish Councils if required whilst they worked with Wiltshire Council's Planning teams to develop emergency plans.</p> <p>Visibility armbands were being distributed to schools by Public Health but were also available from fire stations for walkers, runners, dog walkers, etc.</p>
6.3.	<p><u>NHS Wiltshire</u></p> <p>The update provided on pages 23 and 24 of the agenda was noted.</p>
6.4.	<p><u>Pewsey Community Area Partnership (PCAP)</u></p> <p>An update on the work of PCAP was provided by Stef Robertson as follows:</p> <ul style="list-style-type: none"> <li>• An environment sub-group lead had now been appointed. PCAP looked forward to receiving some interesting reports in due course.</li> <li>• PCAP had also lost the health sub-group lead but were pleased to confirm that a new lead had now been appointed.</li> <li>• The transport group continued with its work. It was reported that although repair work had been undertaken on the A342 and at the Rushall T Junction additional work was still required. Stef was informed that the A342 was due to be resurfaced shortly.</li> <li>• Interviews were expected shortly for the co-ordinator post.</li> </ul>
6.5.	<p><u>Parish Councils</u></p> <p>There were no updates provided with the agenda.</p> <p>Pewsey Parish Council confirmed that draft leases on two public car parks in Pewsey were signed just before Christmas. The transfer of responsibility to the</p>

	Parish Council was expected to take place later in January.
6.6.	<p><u>Youth Advisory Group (YAG)</u></p> <p>Kevin Sweeney, Area Manager Integrated Youth Services, was in attendance to present the update as included with the agenda.</p> <p>In presenting the report clarification was made that the purpose of the YAG was to create a vehicle for young people's voices to be heard and to encourage the younger generation to become more involved in the decision making process.</p> <p>Pewsey had undertaken some good work around this, noting that YAGS had only been in place from October 2012.</p> <p>The Integrated Youth Service team had been working with smaller areas to try to identify volunteers to help local communities deliver local services, providing resources to support those volunteers, such as training. An example given was Wootton Bassett where a commitment had been made to deliver training to local volunteers.</p>
6.7.	<p><u>Pewsey Area Campus Team Update</u></p> <p>Bob Woodward introduced the Board to the update as provided with the agenda and confirmed that Cabinet had agreed to underwrite the project at its meeting held on 23 October. It was understood that the next step would be a competitive tendering exercise. The Team were now working towards agreeing the finer details of a design brief to put forward to architects. It was hoped that this would be completed by the end of January.</p> <p>Thanks were given to Pewsey Vale School for all their assistance and for the potential integration with the School in terms of services to be provided. This included the shared resource of a multi-use games areas.</p> <p>The following were the expected timeframes for the Campus project:</p> <p>Planning application – Autumn 2013  Construction – Spring 2014 to Spring 2015  Campus opening – Easter 2015</p> <p>Ensuing discussion included what developments had been made in terms of outdoor sports facilities, recognising that this had been a core requirement for the younger generation at the early stages of the consultation.</p> <p>It was clarified that much discussion had taken place in terms of the best location for wheeled sports but as yet no specific site had been identified, noting that Pewsey Vale School was unable to agree to the siting of this facility. The school Headmistress, Carol Grant, indicated that they would make available the reasons for this.</p>

6.8.	<p><u>Good Neighbour Scheme</u></p> <p>Mary Soellner, Coordinator for Pewsey Good Neighbour Scheme, was in attendance to provide an update as follows:</p> <ul style="list-style-type: none"> <li>• The Scheme was funded by Wiltshire Council and managed by Community First who ran the Good Neighbour Scheme alongside Age UK. The scheme was designed to provide support to older people to allow them to live at home for longer.</li> <li>• There were approx 22 coordinators across the County.</li> <li>• Work included carrying out holistic assessments to identify agencies and organisations who could help make life easier for the client as well as making referrals and assisting the client to make their own referrals as required.</li> <li>• In the first year of the Scheme 3 parish councils were involved with a target of meeting approximately 30 clients. The first year generated 97 clients with approximately 150 referrals made.</li> <li>• In the last year there were approximately 2,000 clients with 2 to 3 referrals made per client. Leaflets were available and were distributed amongst attendees.</li> </ul> <p>The Chairman thanked Mary for her attendance and presentation.</p>
6.9.	<p><u>Wiltshire Involvement Network (WIN)</u></p> <p>Although no update was provided with the agenda, a flyer was circulated amongst attendees which included details of the last public meeting to be held by WIN.</p> <p>This was taking place on Saturday 2 February at 10:30am at the Devizes Corn Exchange, Market Place, Devizes. All were welcome to attend where the subject for discussion would be the changes taking place on health and social care in Wiltshire.</p>
7	<p><u>Neighbourhood Development Plan</u></p> <p>Peter Deck and Patrick Wilson were in attendance to provide an update on the Neighbourhood Development Plan.</p> <p>Confirmation was given that some progress had been made and that the next step would be to officially apply to Wiltshire Council to enable them to produce the Plan.</p> <p>The next round of community engagement would be dependent on the finalised areas to be covered within the Plan. Although the Plan was currently being developed by the Pewsey Parish Council, other parish councils who may be</p>



	<p>interested in producing a combined Plan were encouraged to contact either Peter Deck or Patrick Wilson.</p> <p>Pewsey Parish Council were holding a meeting to discuss the Plan further on Thursday 17 January. All parish councils were encouraged to attend as the responsibility for developing Neighbourhood Plans rested with the individual parish councils.</p>
8	<p><u>Delegated Authority</u></p> <p>To facilitate the smooth and efficient running of Area Board business and to reduce the need for unnecessary extraordinary meetings the Board was asked to consider whether delegated authority could be granted to the Community Area Manager.</p> <p>Upon vote the Board unanimously agreed as follows:</p> <p><b>Decision:</b></p> <p><b>That in respect of urgent matters that may arise from time to time between meetings of an Area Board, the Community Area Manager, in consultation with the unitary councillors of the Area Board, be granted delegated authority to make any necessary decisions (such as agreement of CATG funding allocations and Community Area Partnership Funding).</b></p>
9	<p><u>Pewsey Blog Site</u></p> <p>Matthew Woolford, Communications Account Manager, was unable to attend the meeting as scheduled. However, flyers were made available at the meeting which provided further information on the Community Blog Site.</p> <p>A screen shot of the blog site was also shown at the meeting. Caroline confirmed that anyone could upload information onto the site and that training was available on request if required. Caroline also announced that articles were reposted to the Pewsey Noticeboard on Facebook, so the potential audience was quite considerable.</p> <p>Further information could also be found via the below link:</p> <p><a href="http://www.pewsey.ourcommunitymatters.org.uk">www.pewsey.ourcommunitymatters.org.uk</a></p>
10	<p><u>NHS Reforms</u></p> <p>Maggie Rae, Corporate Director, was in attendance to make a presentation on the changes taking place in respect of commissioning of services.</p> <p>The presentation included the following information:</p> <ul style="list-style-type: none"> <li>• The Health and Social Care Act 2012, currently being implemented, will bring</li> </ul>

many changes to healthcare including a new model for public health placing people and communities at the heart of the model.

- Public Health was initially the responsibility of local authorities but was transferred to the NHS system in 1974. The transfer back to local authority was therefore a return to the original arrangements.
- Although the authority would take over statutory responsibility from 1 April 2013, the team of 34 had already relocated to County Hall in Trowbridge in preparation.
- A diagram providing clarity on how the NHS funding structure would be changing was highlighted. This included the formation of 'Public Health England' who provided funding to Public Health within local authorities.
- Public Health would continue to work with the NHS advising on major strategies which would always ensure that the interests of the public remained at the centre of decisions taken.
- Healthwatch England, which formed part of the new structure, would be the champion of patients. The Council was responsible for setting up a local Healthwatch.
- The Health and Social Care Act 2012 stipulated that Clinical Commissioning Groups (CCGs) had a duty to seek Public Health advice and that local authorities had a duty to provide Public Health advice to CCGs. Wiltshire had one CCG with three local sub-groups divided as follows:

West Wiltshire, Yatton Kennel and Devizes  
North East Wiltshire  
Sarum

- A memorandum of understanding existed between Public Health and the CCG which was a framework for a more details work plan between the two.
- GPs were leading on the commissioning of local health services. The GP colleagues, who were taking over on the commissioning of services from the PCT, would be encouraged to attend area board meetings from time to time.
- CCGs had funding control over most primary care and local hospital services. It was understood that there would be encouragement for services to be provided locally where possible via local primary care surgeries.
- Health and Wellbeing Boards had also been established as part of the new arrangements. These Boards had the ability to challenge what services were being commissioned.

The Chairman thanked the Corporate Director for her time and for the

	presentation provided.
11	<p><u>Police and Crime Plan Consultation</u></p> <p>Angus Macpherson, the appointed Police and Crime Commissioner (PCC) for Wiltshire, was in attendance to give an update on the Police and Crime Plan Consultation as follows:</p> <ul style="list-style-type: none"> <li>• The Plan would set the strategic direction for policing in Swindon and Wiltshire.</li> <li>• The PCC office consisted of 5 staff.</li> <li>• The commissioning role of the PCC included strategic planning, service specification, contracting and procurement, performance management, assessing needs and priorities.</li> <li>• The draft Plan would be published on the PCC website on 18 February. Formal consultation would take place via the website feedback facility until 10 March. Publication of the final plan would be 28 March.</li> <li>• An outline of the draft plan was given as follows: <ul style="list-style-type: none"> <li>• The Importance of community forums and ‘asset-based’ community development</li> <li>• Protecting the most vulnerable in society</li> <li>• Putting victims and witnesses first</li> <li>• Reducing offending and reoffending</li> <li>• Improving quality of life through reductions in crime and anti-social behaviour</li> <li>• Driving up standards of customer service</li> <li>• Ensuring unfailing and timely response to calls for assistance</li> <li>• Unlocking the resources to deliver</li> </ul> </li> </ul> <p>In concluding the presentation Mr Macpherson reminded all that further information on the draft Plan could be found at <a href="http://www.wiltshire-pcc.gov.uk">www.wiltshire-pcc.gov.uk</a>.</p> <p>The Chairman thanked Mr McPherson for his attendance.</p>
12	<p><u>Community Issues</u></p> <p>Councillor Stuart Wheeler updated the meeting on the Community Issues which had been received by the Area Board.</p> <p>In noting the issues of flooding on many C class roads due to recent extreme weather conditions and specifically the C52 at Manningford, the Chairman confirmed that he would investigate.</p>

### Community Area Grants

The Area Board considered a number of applications for Community Area Grant funding. The Chairman invited the local Councillor to introduce each application, following which a representative of the applicant was given an opportunity to give a brief overview of their project to the Area Board.

#### Decision

Easton Royal Orchard and Woodland Project was awarded £1,500 towards the creation of woodland and mixed orchard areas.

***Reason*** *The application met the Community Area Grants criteria for 2012/13 and would support several Community Area Plan priorities, including working with young people to enable them to care for the environment.*

#### Decision

Home Start Kennet was awarded £349.30 towards the cost of production and dissemination of promotional material to raise the organisations profile in Pewsey.

***Reason*** *The application met the Community Area Grants criteria for 2012/13 and would support several Community Area Plan priorities, including benefiting local families by helping to reduce isolation.*

#### Decision

Pewsey Parish Council was awarded £500 towards the cost of purchasing defibrillators in the village of Pewsey.

***Reason*** *The application met the Community Area Grants criteria for 2012/13 and would support several Community Area Plan priorities, including providing access to medical services.*

#### Decision

Manningford Parish Council was awarded £225 towards the installation of a bench at a bus stop in Manningford.

***Reason*** *The application met the Community Area Grants criteria for 2012/13 and would support several Community Area Plan priorities, including provision of bus services.*

#### Decision

Rose Rovers was awarded £960 towards the cost of purchasing a thermostat for the showers.

***Reason*** *The application met the Community Area Grants criteria for 2012/13 and would support several Community Area Plan priorities, including supporting young people.*

#### Decision

The application from Burbage and Easton Royal Cricket Club for £5,000 would be deferred to the next appropriate meeting due to lack of available funding for all applications.

14	<p><u>Urgent Business</u></p> <p>There was no urgent business for consideration.</p>
15	<p><u>Future Meeting Dates and Close</u></p> <p>The next meeting of the Pewsey Area Board was scheduled for Monday 11 March 2013, 7pm at Pewsey Vale School, Wilcot Road, Pewsey SN9 5EW.</p> <p>The Chairman thanked everyone for attending.</p>

This page is intentionally left blank

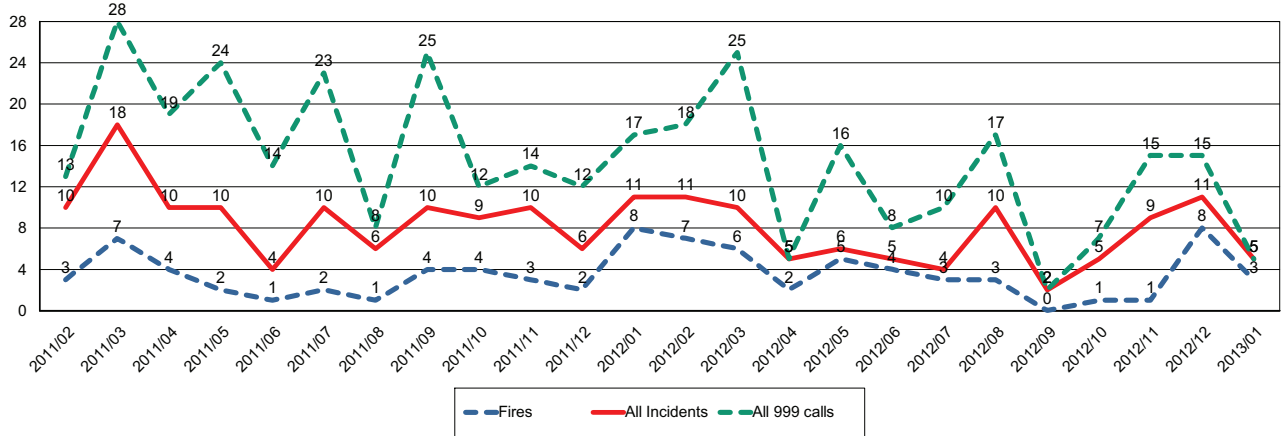




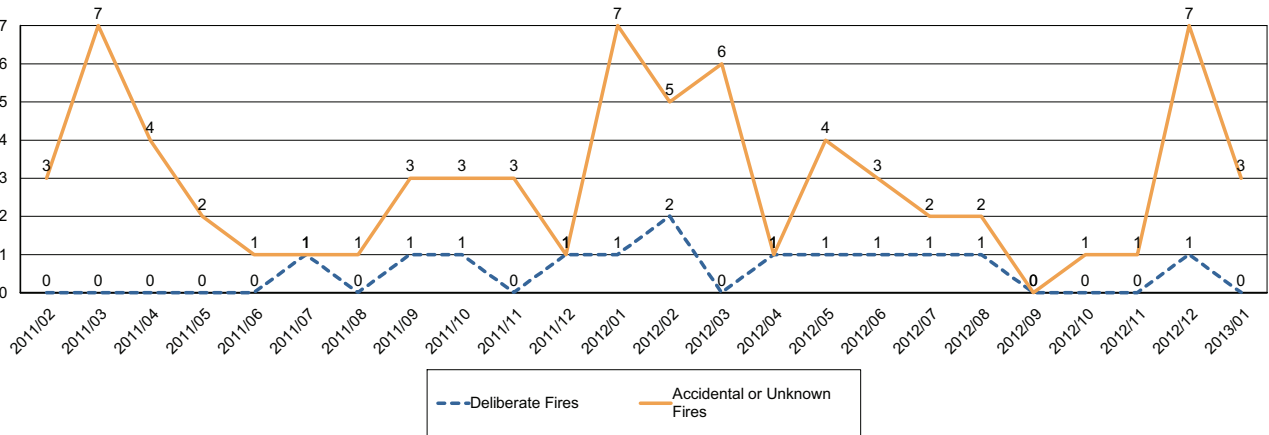
## Report for Pewsey Area Board

The following is an update of Fire and Rescue Service activity up to and including January. It has been prepared using the latest information and is subject to change.

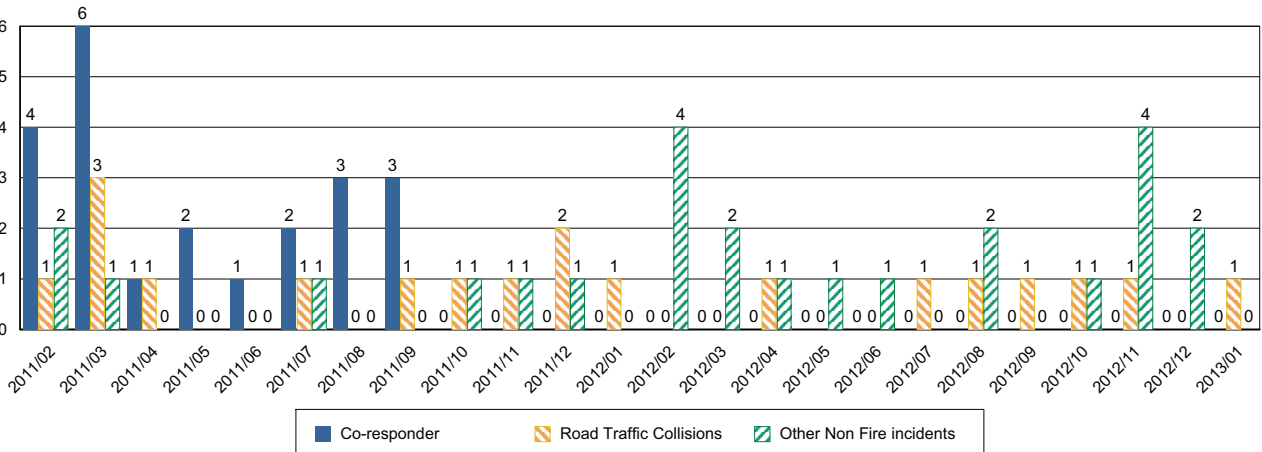
### Incidents and Calls



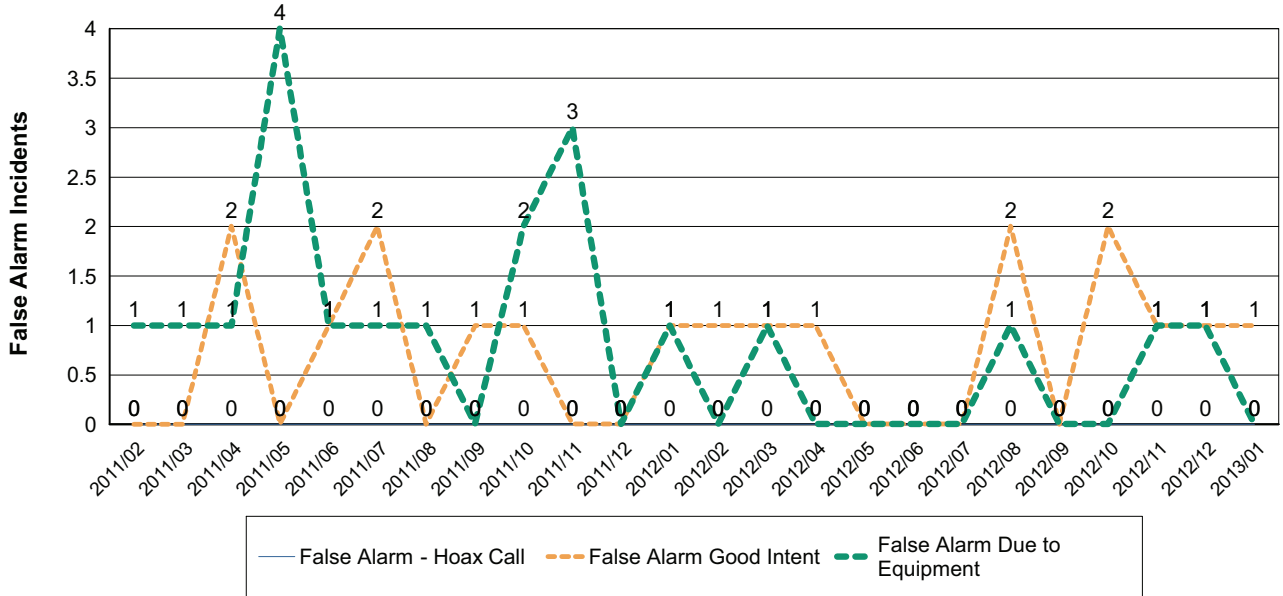
### Fires by Cause



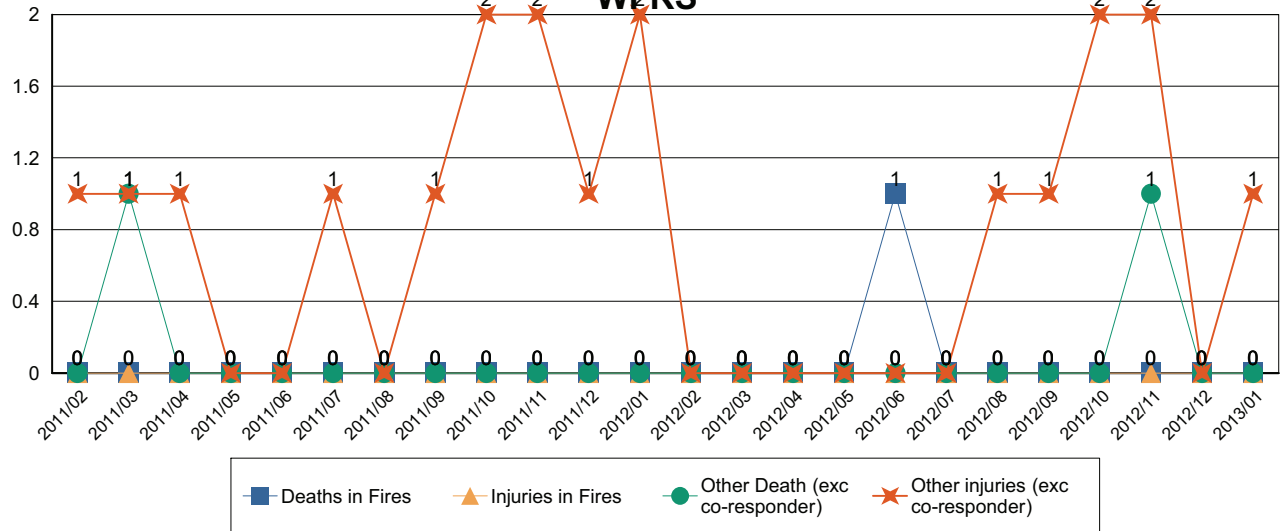
### Non-Fire incidents attended by WFRS



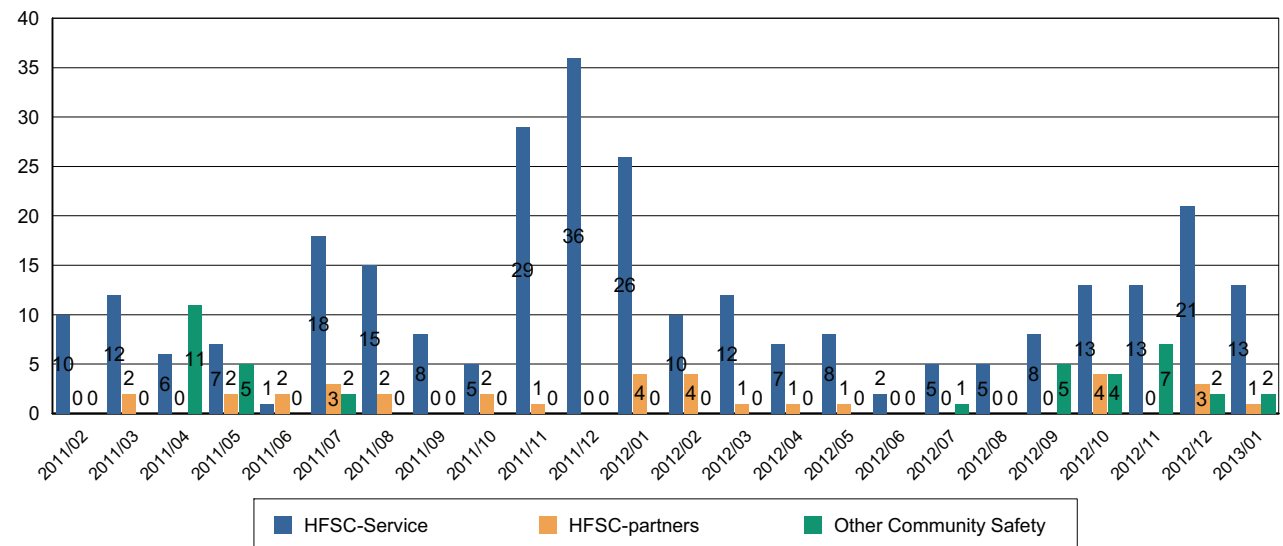
### Number of False Alarm Incidents



### Death & Injuries in incidents attended by WERS



### Home Fire Safety Checks and other domestic safety



Comments and Interventions overleaf

## March 2013 update

**This update will be the last from NHS Wiltshire; from April 1<sup>st</sup> 2013 the commissioning of local health care services will be managed by Wiltshire Clinical Commissioning Group, who will provide the first of their updates to Local Area Boards next month. In the meantime, a message from NHS Wiltshire's Chairman, Tony Barron, as the PCT hands over the baton of responsibility:**

In 2006, I took the helm of NHS Wiltshire, a new Primary Care Trust merging three smaller organisations. Today, as we move towards a new model of NHS commissioning, I would like to record some of the ways in which NHS Wiltshire has made a difference.

When the new board first met, we had a £63million debt and a system that provided patchy and uneven care to a widely dispersed population. Some areas were very well served but others, including some of the most deprived parts of Wiltshire, were under-resourced. Unlikely as it may have seemed at the time, we managed to tackle this debt while improving services across the county.

Doing this meant keeping tight control of our purse-strings, driving a hard bargain with those providing the services, and a remorseless focus on getting the best value for every NHS £. Inevitably and very publicly, this meant taking some tough decisions, but also introducing some award-winning innovations in care such as the Neighbourhood Teams and Primary Care Centres. Today, people in Wiltshire benefit from some of the most cutting-edge and innovative community health services, many of which are the envy of other parts of the UK and are now being replicated due to their outstanding success.

In 2013, Wiltshire's NHS has been 'in the black' for four consecutive years. We have new buildings providing top-notch primary care facilities. Thousands more patients are treated by NHS dentists. People can see a GP at a time that suits them, and Wiltshire was rated one of the top six PCTs for sharing health resources fairly in a national study.

Some of our legacy successes are detailed below:

**Neighbourhood Teams:** Introduced in 2007, Wiltshire's pioneering Neighbourhood Teams have won ringing endorsements from the patients they care for. Caring for patients mainly in their own homes, the teams bring nurses, physiotherapists, occupational therapists and others together to provide seamless, all-round care. Eleven Neighbourhood Teams cover the whole county and provide a range of services including rapid response to patients' urgent needs, rehabilitation services, and nursing and therapy services as part of a planned care package. The model of service provided by Neighbourhood Teams is being replicated across the UK to ensure that patients maintain their independence for longer and enjoy a better quality of life – by cutting down on the need to be admitted to hospital and by helping to reduce delays in patients leaving hospital.

**Primary Care Centres:** Doctors, nurses, therapists, pharmacists, working together in modern buildings ... all but one of the five developments we envisaged in 2007 are up and running: Malmesbury (opened 2008), Westbury White Horse Health Centre

(opened 2012), Salisbury (new replacement surgery at Avon Approach, and Primary Care development at Old Manor underway), Trowbridge (new replacement surgery development underway, hospital refurbished). Progress on the Devizes Primary Care Centre is far less advanced. It has been difficult to find a site that everyone can agree on and which is affordable, but the CCG will continue to work to a successful conclusion.

**Dentistry:** A huge turn-round in access to NHS dentistry has been one of NHS Wiltshire's biggest achievements. Consistently number one on the 'wish list' expressed by Wiltshire people at our regular Stakeholder Assemblies, access to an NHS dentist has gone up by a third in the lifetime of NHS Wiltshire. Thanks to an investment of £3.1m, NHS Wiltshire expanded dentistry overall, but also invested in measures to shorten waiting times for orthodontic treatment and a highly successful programme to improve the oral health of under-fives, setting a foundation for a lifetime of healthy teeth.

**Stroke:** Wiltshire is one of the country's top performers in the care and treatment of people who have had a stroke, according to the CQC in 2011.

**Cancer:** People diagnosed with cancer in Wiltshire do better than the national average, according to the ONS figures. Better screening services and encouraging a healthier lifestyle are the two prongs of the county's Cancer Reform Strategy.

**Cleaner hospitals:** Wiltshire Community Health Service was commended by the CQC for its effectiveness in tackling hospital-acquired infections (figures produced prior to management of WCHS transferring to Great Western Hospitals NHS Foundation Trust).

**Stop smoking:** Wiltshire's Stop Smoking Service has consistently smashed through its targets, helping thousands of smokers to quit.

These and many more success stories make me proud of what we've done at NHS Wiltshire. I'd like to thank the extraordinary team of people who have worked so hard to make this happen, and send Wiltshire CCG the very best wishes for continued success as the National Health Service moves towards a new era of delivering health care.

Tony Barron  
Chair, NHS Wiltshire  
March 2013

The next PCT Board Meeting will be held on **Wednesday 13<sup>th</sup> March** – venue and time to be confirmed – please refer to the NHS Wiltshire website: [www.wiltshire.nhs.uk](http://www.wiltshire.nhs.uk)  
Members of the public are welcome to attend. Papers are published a week before the meeting on or on request from Stacey Saunders, NHS Wiltshire, email: [stacey.saunders@wiltshire.nhs.uk](mailto:stacey.saunders@wiltshire.nhs.uk)

## Update for Pewsey Area Board

<b>Update from</b>	<b>Great Bedwyn Parish Council</b>
<b>Date of Area Board Meeting</b>	11 March 2013

### Headlines/Key Issues

- Working closely with WC and Aster Housing on joint strategies to meet the challenge of keeping traffic flowing in the village.

---

- The PC is actively looking at measures to increase road safety in and around the village, with proposals for signage, pavement creation and a walk to school scheme.

---

- Great Bedwyn Youth Club has recruited a youth worker and secured funding for base costs during 2013/14 via an earmarked amount in the parish precept.

---

- The PC has recently launched a website [www.greatbedwyn-pc.gov.uk](http://www.greatbedwyn-pc.gov.uk) The aim of the site is to provide up to date information on activities in the parish, give details of PC meetings and encourage residents to contact their council with any questions or to report a problem.

This page is intentionally left blank



## ***Update for Pewsey Area Board***

<b>Update from</b>	<b>North Newnton Parish Council</b>
<b>Date of Area Board Meeting</b>	11 March 2013

### **Headlines/Key Issues**

- 4 Planning Applications in the last quarter – one “called in”

---

- Speeding through the villages of Hilcott, Bottlesford & North Newnton is still posing a problem

---

- Gearing up for the Elections in May –our new Clerk is attending a workshop on this matter

---

-

This page is intentionally left blank

### Youth Advisory Group – Pewsey Area

Since the last update we have held two meetings.

The first meeting involved an update on the Pewsey area Campus development and from that meeting we agreed to do a quick questionnaire on a skate park for the area.

The second meeting was held on 28<sup>th</sup> February and we worked on the following:

#### Update on the campus project

We understand that planning permission will be sought in Autumn 2013 in line with other campuses, work is likely to start in 2014, with completion in Easter 2015.

Skateboard questionnaire

We have had 70 responses so far and the results have been forwarded to the Campus team.

#### Have a go at Carnival

During the review of last year's Carnival it was noted that we didn't provide events aimed at teenagers between 13 and 17 years of age.

What we would like to do in Carnival 2013 is to provide these teenagers with opportunities to "have a go" at something they've never tried before.

This could be taking part in a football training session; being coached at tennis; water polo; clay pigeon shooting; a class on how lighting and sound works in a theatre; an art class; how to bake a cake; how to make a curry; how to knit; how to fish... the potential list is endless.

The idea is that people in the community offer to run a session(s) for a specified number of teenagers, e.g. 4 people for clay pigeon shooting; 10 people for a class on baking a cake. This would be at a specified time over the Carnival period, e.g. Tuesday evening 6.00 to 7.30 at X.

The next meeting is at the Shak at 6pm finishing at the latest 6.55pm so we can then go to the area board meeting!

#### Summer holidays

At the last meeting we talked about combining activities as the centre will now still be open we are looking to compile a leaflet showing all activities available to young people across the Pewsey Community Area if you have any events going on that you would like included please contact [karen.brown@wiltshire.gov.uk](mailto:karen.brown@wiltshire.gov.uk)

#### Courses available at The Shak

Babysitting course starting 18<sup>th</sup> March  
Foodwise ASDAN award and food Hygiene  
Sports Leaders  
First aid

Again if any young people are interested in any of these please contact [karen.brown@wiltshire.gov.uk](mailto:karen.brown@wiltshire.gov.uk)

### Neighbourhood panel

Christine from Aster Communities told us about some of the work Aster Communities are involved in and invited us to a taster event on March 12<sup>th</sup> 4pm -6pm looking at a neighbourhood panel being set up in the area which has the power and funding to make changes.

### Next meeting

Date of next meeting: 11<sup>th</sup> April 2013 6pm at The Shak – Pewsey Development Centre for Young People.

If you know of any young people that might be interested in attending please let them know. We need young people representing different clubs, organisations and areas



**March 2013 update**

Now that Wiltshire Council Cabinet has approved all of our proposals and agreed to provide the capital funding, work is under -way now to prepare a design brief ready for the competing architects tender process.

Keep your eye out for Area Board updates in the coming months or go to our website to keep up to date with our work.

**What is the campus, and where?**

The Pewsey Area Campus will be largely clustered on the present Leisure Centre site, which currently provides leisure and youth facilities, and the new library which has some potential for wider use.

This is where you will be able to access a range of local services, including the most important themes arising from our canvassing including:

- Leisure
- Youth
- Community Services - those provided by Wiltshire Council as well as partners.

All of the above will be affordable/ sustainable over the next 25 years, plus. We have also identified a requirement for a mobile satellite service to take some of these community services to outlying villages. One of the most significant features of the new facility will be the physical and, where possible, the functional integration with the Pewsey Vale Academy.

**Who and What are the Campus Team?**

We are a group of local people who were appointed by the area board in May 2011. Our details can be found on the WC website, under 'Area Boards/Campuses'.

**What have we been doing so far?**

We have consulted you and reported back to the Area Board on a regular basis, you can view the notes of our Team meetings on the website to keep up to date with our discussion.

# Pewsey Area Campus

Leisure · Youth · Other Services



[www.pewseyareacampus.co.uk](http://www.pewseyareacampus.co.uk)



## So what is happening next?

In the coming few months we will:

- Finalise the design brief.
- Take part in selecting a chosen architect.
- Submit the planning application during early Autumn 2013.
- Continue discussions with our On-site partners. (Pewsey Vale School, Pewsey Primary School, Children's Centre, Leisure, Youth and library services).
- Continue discussions with WC service providers and other voluntary and community sector organisations.
- Start to prepare the ground for a programme of road shows so that you can see what is being planned.

## How can I keep up to date with the project or get in touch with the campus team?

We welcome your views and feedback on the campus proposal. You can get in touch through the campus website or email

[CampusConsultation@wiltshire.gov.uk](mailto:CampusConsultation@wiltshire.gov.uk)

It will be important, and you are strongly encouraged, to come back to us with comments and further suggestions; we value highly your input into what will be a long-term service centre for you and your families.

Best wishes from,

***The Pewsey Area Campus Team  
March 2013***

## Visit our new Pewsey area campus website

[www.pewseyareacampus.co.uk](http://www.pewseyareacampus.co.uk)

We shall be using this site to keep you up to date on developments.



# Agenda Item 10

## Parish Council/ Pewsey and District Carnival Partnership Pre reading for the meeting on 11/3/13

From: Bernie Bradshaw Chairman Pewsey and District Feast and Carnival (PADFAC)

When I took over the Chair of PADFAC in 2012 I conducted a number of interviews to understand what the aim of Carnival was. Although raising money for good causes came high on the list many people believe that the annual Carnival is about much more than charitable donations. I summarised these under four headings, although you personally may believe there are more:

### Neighbourliness

This is about being friendly, helpful and generous. There are many examples of this over the Carnival fortnight

### Inclusiveness

This is not just about encouraging people to be in Carnival but also about volunteering to put it on. Some strong and happy relationships have been made a diverse range of individuals by getting involved in the various events

### Fun

Fun means different things to different people. Carnival is about as many people as possible enjoying themselves whilst having respect for others and their property. There's nothing wrong with having events that involve alcohol but over the next few years I'd like to see more family events that don't rely on a drinking scene. See a proposal below for teenagers 13- 17 years.

### Charity

Donating money is important in supporting others in our community. Pewsey and District Carnival have collected money for good causes from the very start in 1898. It was in fact the initial reason for the procession!

We brought these four areas together under one main aim: To Build and maintain a strong community.



It's my belief that this is the same objective as Parish Councils in the District, and as such I recently met with Pewsey Parish Council to discuss how we might form closer links and how the Council might use the Carnival as a vehicle for achieving our common goal.

The second insight from my interviews was that we are the Pewsey **AND DISTRICT** Feast and Carnival (District meaning the whole of the Pewsey Community Area). Although a number of residents of villages outside Pewsey volunteer to help in Carnival, with some playing a major role, there is no structured liaison

which allows communities to work together. With this in mind I'm keen to create opportunities that allow the villages in the District to participate more fully if they wish to.

The Carnival Committee is looking for a long term relationship and as such we propose working together on three ideas for 2013. This will give us an opportunity to see what we can achieve; what's the best way of communicating; and ironing out the inevitable issues that a new relationship will bring.

### Proposal for your consideration

1. Defining areas in the villages that people recognise as Carnival.

In Pewsey we are considering the use of the car park outside the Bouverie Hall as a central area for parts of the Carnival. In concept this could be our "Village Green". We could investigate lighting the area with a similar arrangement to the lights around King Alfred's statue. The circular arrangement of lights would give the feel of a virtual tent. Not necessarily this year but in the future we might look to lay artificial grass on part of the area with benches etc. The aim is to make the area feel welcoming, pleasant and safe. This would be a family friendly area with no alcohol.

The prime time for use of this area would be Carnival day and evening; the children's party; a potential teenager event for 13-17 year olds; Opening and closing ceremonies. Wheelbarrow race and Cossors auction would need to use it as they have in past years.

In the other villages in the District I'd like to consider with Parish Councils how they might want to establish locations and events as a part of the Carnival Fortnight

2. Urchfont Scarecrow Festival is hugely successful in maximising returns from their community event. Their big seller is tea and cakes, but a beer tent and savoury food stalls add money to their cause. We attract large numbers of people from outside the area on Wheel barrow race night and Carnival night. The intention is to have two initiatives:
  - a. **Tea and Cakes.** Together we need to rally local support to make cakes, lots of cakes! These would be sold at: opening and closing ceremonies; the duck race; Carnival day.
  - b. **Savoury foods** (Pig roast; burgers; Indian cuisine; pies...) could be run by local businesses in the food trade. The big ticket events are Carnival evening and night; Wheelbarrow race night; four-legged race night; Car boot sale; Cossors Auction. The Carnival would look to make some money from these sellers but primarily it would be seen as a community initiative to help businesses raise revenue as strong healthy businesses are essential in our community
3. In a review in October 2012 it was noted (again!) that there were no events for 13-17 year olds. With Karen Brown (Shak youth leader) and the Area Youth Council we intend to build a special event. The working title is "Have a go at Carnival". A paper outlining the idea is attached.

### So what would we do?

At the meeting on the 11<sup>th</sup> March I want to get feedback from Councillors about this proposal. The key decision for me is whether we build a closer working relationship between the Carnival Committee and the District's Parish Councils.

If some people are interested in exploring further we would arrange a meeting. This doesn't have to be an all or nothing scenario, we might decide to scale down the proposal or try something different. We have a number of years to build a different relationship, the important element is that we explore and exploit the opportunities we have to strengthen our communities.

**Have a go at Carnival time!**  
*Events for young people 13-17 years*

What's the problem?

During the review of last year's Carnival it was noted that we don't provide an event aimed at teenagers between 13 and 17 years of age.

So what can we do about it?

What we would like to do in 2013 is to provide these teenagers with opportunities to "have a go" at something they've never tried before. This could be taking part in a football training session; being coached at tennis; water polo; clay pigeon shooting; a class on how lighting and sound works in a theatre; an art class; how to bake a cake; how to make a curry; how to knit; how to fish... the list is endless.

How will it work?

The idea is that people in the community 'offer' to run a session(s) for a specified number of teenagers eg 4 people for clay pigeon shooting; 10 people for a class on baking a cake... at a specified time over the Carnival period eg Tuesday evening 6.00 to 7.30 at X. An alternative is to run all events over the middle weekend... to be decided.

We would publish all the 'offers' and the teenagers would enrol in the session(s) they wanted to experience. We would ask teenagers to sign up for an 'offer' that they've not experienced before or perhaps one at which they are not very able, but would like to learn more.

We are the Pewsey and ***District*** Carnival and we would like 'offers' to come from across the district, from Bedwyn in the east to Marden in the west, Oare in the north to Upavon in the south.

Who's interested?

It is hoped that the project will be run through a partnership between a number of parties:

- Karen Brown of the Shak. Karen will be the leader for this project given her experience and expertise she is the ideal candidate
- The Pewsey Area Youth Council
- Churches
- Scouts
- Carnival Committee

The centre of the project design and control will be the Shak

Although Pewsey Vale School cannot directly "partner" this initiative they are keen to offer resources and communication to parents as a way of getting volunteers.

What do we need next?

The details need to be thought through but in essence the idea is that simple.

We need to agree an initial meeting with all interested parties; brainstorm the tasks; allocate who's doing what; and start contacting organisations!

This page is intentionally left blank



## **Pewsey Area Board Achievements 2009-2013**

Since 2009, local people have submitted 130 issues to the Area Board for action 83% of these have been resolved and the remainder are under active consideration at the time of going to press.

## **Working with families on low incomes**

The Pewsey Area Board has been pioneering the Wiltshire Voices project with a focus on rural families living on low incomes. The project started in the Summer of 2011 with a stakeholder event at the Children's Centre in Pewsey that brought together agencies working with rural families.

There followed a series of workshops and activities with a number of families that culminated in a film produced by BAFTA Award winning film makers True Vision. The film was launched at the Bouverie Hall in Pewsey on 1st October and was followed by an action planning



session to help the Area Board prioritise local actions.



## **Focusing on priorities**

In January 2012 the Area Board and the Community Area Partnership ran a Community Conference at the Bouverie Hall to discuss the Joint Strategic Assessment for the area and identify key priorities. Some of the priorities that emerged included more support for people with Dementia, access to GP appointments, improving access to the countryside, affordable local housing, job skills training and a community facilities mapping exercise. The Pewsey Community Area Partnership held a special housing meeting in June 2012.

## **A Year of Celebration**

The Board brought together key people to work on a display for the Queen's Diamond Jubilee event in Salisbury Cathedral Close – these included a local artist and historians as well as representatives of local attractions, businesses, youth service and Heritage Centre. The Queen and Prince Philip visited the Pewsey Area Board's jousting tent at the event. The Area Board also provided funding to 24 parish councils to help them with their Jubilee celebrations.



## **Supporting Community Groups**

The Area Board has given over £160,000 to support local organisations and projects. Projects supported have included:

- Village hall refurbishments and improvements
- First Aid Training
- Sports Club Improvements and Equipment for cricket, football, bowls
- Pre-school and Nursery Equipment
- Village Newsletters
- Scout Group start ups and equipment
- Play equipment

- Footpath Stiles
- Village Gates
- Pewsey Neighbourhood Development Plan
- Superstrings Folk Music for young people
- Improvements to recreation areas
- Celebratory Events – (Royal Wedding, 200th Year Anniversary Alton White Horse, Jubilee)



### **Working with young people**

The Board has supported a number of projects aimed at young people with funding of around £4,500 each year. Projects have included the establishment of a Breakfast Club in Pewsey, a Youth Dance project, Trips for SHAK (youth club) users, trips for Great Bedwyn young people into Marlborough, a creative film project, Scout Club start up funding, skate park trips, a music night, lighting for a junior football pitch, graffiti workshops and much more.

### **Transport and Highways**

The Pewsey Community Area Transport Group (CATG) has delivered a number of local highways projects including:

- A new footpath alongside the main road at Rushall – enabling villagers to walk safely to the school and to the village hall.
- Footpath improvements in Great Bedwyn to increase pedestrian visibility when crossing a busy road
- Wilcot Road, Pewsey – improvements to the road layout to change the priority to make it harder for people to go the wrong way down a one-way system.
- Extensive road safety improvements in Woodborough
- Various signage improvements
- Improvements to light signaling at Wilcot Road, to give children more time to cross the road to the school
- Part night lighting schemes in Huish, Upavon, Pewsey, Chirton, Stanton St. Bernard, Charlton
- 11 Community Speed watch schemes

### **Working with Partners**

The Area Board has strong links with the Pewsey Community Area Partnership (PCAP), and through the liaison role of the Community Area Manager (CAM), the Children's Centre, Youth Development Worker, local Schools, Parish Councils, VCS Support organisations and colleagues within the Council.

### **Passing on Powers**

The Area Board has overseen the transfer of a number of Council owned green spaces to parish councils at East Grafton, Upavon, Pewsey and Alton Barnes. The transfer of Council owned car parks in Pewsey has recently taken place. Upavon Community Group was supported to utilise the unused school facility in the village.

### **In Summary**

Pewsey Area Board has achieved a lot over the last few years with more people getting involved. A large number of community groups and local voluntary organisations have benefitted from the simple grants process, and more and more people are becoming involved in this community through volunteering. The Area Board helped to keep Saturday opening at the Library and assisted with the recruitment of volunteers to extend its opening hours. The Area Board recruited local people to a Shadow Community Operations Board to take forward the CAMPUS project.





WILTSHIRE COUNCIL

PEWSEY AREA BOARD  
11 March 2013

---

Applications for funding to support projects for young people

Purpose of the Report

To ask Councillors to consider three applications for funding from a separate Youth Funding budget which has £1,775 left.

1. Young people from Great Bedwyn Youth Club are seeking £140 for a pottery workshop which will involve the design and production of mugs which they will then paint once they have been fired. This will cover the materials for 20 people to each make a mug. Labour and kiln firing is an in kind contribution.
2. Young people from Great Bedwyn Youth Club are seeking £600 to pay for transport and trips - the grant given by Pewsey Area Board a few years ago has now been spent. Every term the youth leader helps the young people to organize a trip, and the young people decide where to go. Recently they have been bowling and ice skating which they would like to do more of.
3. Savernake Forest Scout Group are seeking £1,000 for their Cooking Under Canvass Project, they have been offered a 2<sup>nd</sup> hand mess tent which includes walls. It costs £1,600. Cooking is currently carried out under garden gazebos borrowed from parents – unfortunately they don't offer the protection for prolonged periods of cooking in exposed fields for a lot of people.
4. Pewsey Area Youth Council are seeking £1,000 for a "Have a Go at Carnival" project which is about businesses and organisations running sessions for a specified number of teenagers between the ages of 13 and 17 – the types of sessions are endless but it is intended to include activities such as clay pigeon shooting, archery, baking, first aid, cookery, bowls, tennis, football, rugby, sewing/knitting, arts and crafts etc. Transport to be provided to and from the activities. Funding is required for travel, venue hire, equipment, advertising and any professional input that may require payment. **Note: The Youth council have agreed that this application can be deferred to July**

Background

1. Area boards had been given extra funding to engage young people who are currently unable to access existing services (e.g. by providing transport to existing provision/delivering services in rural areas/delivering services that target specific groups.)
2. Pewsey Area Board had £4,494 allocated to these youth funding projects, which is in addition to the Community Area Grant budget. It allocated £2,719 at its

meeting in November.

3. It has been agreed that a Participatory Budgeting process can be used as a method of allocating Area Board's youth funding in accordance with the principles of local governance. The Participatory Budgeting Unit defines PB as:  
'Participatory Budgeting is a method where local people decide how to allocate part of a public budget. It directly involves local people in making decisions on the spending and priorities for a defined public budget and aims to increase transparency, accountability, understanding and social inclusion in local government affairs.' Councillors may or may not use the Participatory Budgeting process to determine these applications.

### Main Considerations

4. Councillors will need to be satisfied that grants awarded in the 2012/13 year are made to projects that can realistically proceed within a year of the award being made.
5. The Youth Funding item may adopt the principles of participatory budgeting process with decisions made by those present in the room, that is, Board members and members of the public present on the day, should members which to take this approach. Alternatively they may award the funding as per the Community Area Grants Scheme.
6. If participatory budgeting is to be followed, the process will be:
  - Each applicant/s present their project to the meeting, this might be a verbal or power point presentation, a video or other means of communicating the salient points of the project followed by
  - a question and answer session. Questions can come from Members of the Board or Members of the Public
  - Once all applicants have presented and answered any questions, voting will take place using voting handsets. Voters will be advised to bear in mind the following criteria when voting:
    - Does the project demonstrate value for money
    - Will the project leave a legacy for the area
    - Are there demonstrable benefits for young people
7. Success will be measured by votes cast
8. Unsuccessful projects will be advised to discuss other means of funding their projects with the Community Area Manager.

### Implications

9. Environmental Impact of the Proposals

Youth Grants will contribute to the continuance and/or improvement of cultural, social and community activity and wellbeing in the community area, the extent and specifics of which will be dependent upon the individual project.



10. Financial Implication

Awards must fall within the £1,775 budget allocated to the Pewsey Area Board.

11. Legal Implications

There are no specific Legal implications related to this report.

12. HR Implications

There are no specific HR implications related to this report.

13. Equality and Diversity Implications

There are no specific Equality & Diversity implications related to this report.

Recommendation

It is recommended that the Area Board:

- Consider using the participatory budgeting process as indicated in sections 4, 5 and 6 above as a method of distributing Pewsey's youth initiatives funding.
- Agrees to support the enclosed applications and allocates the budget of £1,775 to take the three applications selected through the process.

---

Report Author: Caroline Brailey, Community Area Manager  
Tel No: 01225 718609  
E-Mail: [caroline.brailey@wiltshire.gov.uk](mailto:caroline.brailey@wiltshire.gov.uk)

---

Appendices:

Appendix 1: Youth Funding Proposal: Pottery Workshop  
Appendix 2: Youth Funding Proposal: Transport and Trips  
Appendix 3: Youth Funding Proposal: Cooking under Canvas

This page is intentionally left blank

**Pewsey Community Area Transport Group  
Meeting held on Wednesday 23 January 2013**

**1. Apologies and Introductions**

**Attendees**

Robert Hall – Pewsey Area Board  
Terry Eyles – Pewsey PC  
Colin Gale – Rushall PC  
Peter Deck – Pewsey PC  
Vincent Logue – Wiltshire Police  
John Brewin – Woodborough PC  
Jon Mulroy – Upavon PC

Patrick Wilson – Pewsey Chamber of Commerce  
Caroline Brailey – Wiltshire Council  
Jerry Kunkler – Pewsey Area Board  
Mark Stansby – Wiltshire Council  
Richard Netherclift, Manningford PC  
Noel Maskall – Upavon PC  
Paul Cowan – Upavon PC

**Apologies**

Paul Bollen, Spencer Drinkwater, Adrian Hampton

**2. New delegations**

i) Review of C and unclassified roads – Mark reported that there has been a 12 week delay due to change in consultant Mouchel to Atkins. They are now gathering data and hope to circulate results in April.

ii) Caroline explained that the first 6 month SID rota had now been put together and all parishes on the rota have been written to. The SID was due to be in Upavon this week but it was noted that it was still at Wilcot. **Action: Caroline to ask Vicky what will happen if it slips – we don't want a village missed out. \*Note, the SID was at Upavon by Thursday\***

Upavon Trenchard Lines, Caroline explained that an MOD Police Officer requested a speed survey and the resulting 85%ile was 49 mph in 40 mph limit. It was not known if the MOD had any willing volunteers for CSW – Upavon PC will make contact – it was agreed to add this location to the SID rota. **Action Caroline to add to SID rota, Upavon PC to contact MOD at Trenchard Lines.**

**3. Budget**

It was confirmed that the current budget (2012/13) is £7,000 (£7,130.58)

**4. Update on Priority List**

a) Pedestrian access to Pewsey Rail Station – no news to report, the brief has been issued to Atkins – it was due to be returned today. They have confirmed that £10,000 will be enough to cover the feasibility study.

b) Wilcot One Way system – this is virtually completed, just a sign to be illuminated. It was noted that the road markings are lifting already – Mark will arrange for these to be

refreshed. The signs directing people into the village from Wilcot Road had been done, as has new signing into school. There is some subsidence which has been reported to Paul Bollen. **Action: Mark to organise road markings to be refreshed.**

c) Woodborough Road Safety – the Wiltshire Council works were held up whilst PC negotiated with landowner, all done now bar the section where railings join footway. Site work (dropped kerbs tactile paving) due to commence 4 Feb weather permitting. Current issue is the request for consideration for 20mph limit. The Wiltshire 20mph Speed Limit trials are now completed and the results are being analysed to see if they are likely to be effective – Woodborough are registering an interest to be considered for possible 20mph should Wiltshire Council think it is a good idea. Mark explained that the policy is to be written, pending guidance from DFT. Where 20mph trials were put in there has been a drop in all speeds – they haven't achieved 20mph but any reduction is good. 20 mph restrictions should be self enforcing, whether to choose between zone and limit is about how much reduction you need to achieve, the recommendation is for speeds around 24-25mph. Where speeds are high i.e. in the 30s, 20mph signs won't achieve lower speeds. A zone is enforceable, but shouldn't need to enforce as each calming feature has to be within 60 metres. Vince does carry out speed checks in Woodborough – many are doing 30mph which he feels too fast outside the school, particularly larger vehicles such as tractors. Vince feels that 20mph would be reasonable. It was suggested that this just be during school time and Mark said that the new guidance on the DFT website on setting local speed limits mentions variable/part time limits. Its advisory though so can't enforce. It was agreed to recommend to the area board that the Smithy Lane issue could be closed, but Caroline will advise that it would be considered for possibility of 20mph in the future. CATG agreed to consider the request for 20mph limit once the results of the trials and subsequent policy report had been published.

**Action: Recommend to the area board to close issue number 2593, Safety of Pedestrians in Smithy Lane, Woodborough**

d) Footpath Grey Flags Upavon. Mark produced a basic plan. Highways own up to the edge of carriageway and so there will need to be a land dedication to achieve the 1.5m required for a footway – 4 property owners, all have agreed by letter but there is a legal process to go through- we don't know what cost that will be – because if sold in future the next person could disagree, but once transferred then its fine.

Grey Flags is a Grade 2 listed building with a double hedge line – the owner is concerned about privacy and the sound level of the road and the effect it could have on the property – he doesn't like black top and would prefer a subtle covered pavement, i.e. light grey would make road look narrower – Paul feels that black top will give the impression of the road being wider. Mark confirmed that it will have to be kerbed as it is A class road so will need proper kerb face – black or coloured it still needs kerb face.

A wall has been suggested as the best way to deaden noise and protect the property from view from road, although the owner is open to suggestions to improve privacy – a laurel hedge would take years to mature. Who meets cost of this? If was reasonable then the owner might contribute towards it – line of sight from road to drive could be improved so think the owner may pay towards doing that. It is a question of negotiation. It definitely won't be paid for by CATG funding as this is purely reserved for highway improvements.

The alternative path surface hasn't been allowed for in the prices – the parish council could pay for something on top. The work has been split into two sections – A to B which is the caravan park to the boundary of grey flags and is estimated at £12,500 – this allows for drainage at the two vehicle accesses, removal of 11 concrete bollards, and anticipated up lift in prices when new contract comes in plus contingency. For entire length should consider another £4,000 for drainage for whole length (split 50/50) – The road surface falls away so it might not be necessary. There hasn't been a topographical survey so it is just a cautionary note. It also doesn't include legal fees for land dedication. The length B-C – includes removal of a large boulder on corner (Paul said he can move it). It is estimated at £8,300 allowing for contingency as before. The total is £21,000 and these costs don't include removal/disposal of hedging, timber fencing, new timber fencing, installation of sound barrier, land dedication and on carriageway drainage. The property owners are responsible for fencing – two are ok to do this, one has put fence up already and set back, caravan park have organised how they will re fence. Trees behind bollards have to come out too. Negotiation with landowners costs. It was asked if there anything was put in the precept for the work? This has been ongoing since 2000, they built the first bit 3 years ago, and entered into partnership with MOD, Upavon PC, farmer and the tenant that would use the path. The tenant has now gone, only farmer involved, Upavon PC pay peppercorn rent from MOD – the precept paid for part of it and part from fundraising. This is second phase and third is area into centre of village which is more problematical. Precept £14k per year 50% spent on grass cutting. Little to come out of it for this but Upavon PC have set £1000 from next year's precept initially to look at legal fees, and over next year will need to put more in. Looking for lottery funding for it, several partners, caravan site, 22 units – 5 houses – this is the only area in Upavon that doesn't have a pavement, it is lethal to walk down. It wouldn't start until next financial year.

The parish council confirmed that they are aware that they need to raise money but they didn't know the costs until now. Now that there is a plan they can start working on actual costs. A Traffic Regulation Order is £3-5k **Action: Mark to get legal costs for next meeting.** Legal costs to be met by Upavon PC. Grey flags is a stumbling block but A-B is able to proceed.

Precept for next year has already been set – a month ago, so allowed £1000 – from precept that maintain from previous year. Could pay a bit more from 2014 precept for B-C.

It was agreed to give funding towards the A-B stretch. CATG funding is capital so can't be used for legal fees. It was agreed to recommend to the area board to commit £7,000 from this financial year with Upavon PC covering the legal fees and £7,000 from next financial year (subject to funding being available). **Action: Recommend to the area board to approve the funding of £7,000 from this year's budget, and £7,000 from next year's CATG budget (subject to funding being available) for the Grey Flags Footpath Project length A-B**

e) Footpath A342 towards North Newnton. Rushall PC really want this to go ahead. There is an outline drawing, but not detailed, also had costing but this was a couple of years ago now. They would like to move forward for detailed drawings and costings which the PC is willing to pay for – **Action: Mark will liaise with Colin.**

f) Dropped kerbs at The Knapp – Spencer confirmed that funding from LSTF can be used for this and it will go ahead.

g) Footpath Elm Row, Rushall traffic is getting worse people can't walk out their front doors – 44 tonne vehicles are increasing. Mark confirmed that this is would be difficult to resolve because there is no land to consider a footway – to move an A road just one metre is very expensive. There is a planning application for houses on chicken farm at Upavon – plans include a footpath but users will have nowhere to go when they get to Rushall. The School closed in Upavon, the next catchment is Rushall, developer in S106 should contribute to hard path from Upavon to boundary of field – Wiltshire Council could stop school transport as they are within 3 miles, but children can't be expected to walk down grass path this time of year. It would be good to have a link to school, may be able to push for funding for rest of the path from the developer.

**Action: Upavon and Rushall PCs liaise about their wish list for the developer.**

h) and i) nothing to report, remaining on list

## 5. Issues List

535 Manningford PC is increasingly concerned about the volume of traffic using the C52, the Parish Council wondered if it was possible for a sign saying Pewsey Marlborough Swindon so people without sat nav will use main road. **Action Mark will provide a quote to next CATG for these signs.**

The Bridge has been redone, but now has kerb stones which has made the bridge narrower – the Parish Council would like signage saying that it is narrow, and possibly have a priority sign **Action: Mark will talk to bridge team.**

**Spencer and PC to liaise regarding vehicle movement survey in Spring.**

538 Speeding on A342, Chirton

Chirton PC submitted the following questions which were answered as follows:-

1. We haven't had the police presence to enforce the speed limit. I do think it would be a good idea and I have spoken to Joe Sadd about it, but no news. I discussed this with Sgt Vince Logue – he has said that he travels the road daily and is monitoring the speeds. So far he doesn't believe there to be a problem but he will continue to monitor – this was accepted by CATG. Since the meeting the Police carried out speed checks and there were no incidences of speeding.

2. The speed limit distance is actually too short. We did apply for an extension which was refused, but drivers are not respecting the limit because it is no sooner imposed than gone again! The speed limit review has been completed, the findings were reported and there was an opportunity to comment. Chirton indeed made an objection on the basis that it was too short, but the decision was made to go with what was advertised. Unless there is considerable change on the ground to the environment, or the national criteria changes considerably, the cabinet member has decreed that he will not carry out a further review. This statement was made at CATG and was accepted.

3. We did apply for at least one SID and assumed that it was going ahead as Robert Hall had seen a letter to that effect, but this hasn't been installed either. There won't be a SID unless a speed survey is carried out to show that speeds are in excess of the limit – initially we did feel that it might be possible to put a SID in, but the criteria for the use of a SID does not allow us to.

4. On leaving the village going in the direction towards Rushall the 40mph sign on the right hand side of the road is dwarfed by a delimit sign and thus drivers speed up before the end of the 40mph limit. The delimit sign cannot be moved. It was felt that this does not affect speeds at the point of the junction, which is where the speed concerns were the greatest. CATG agreed that there wasn't anything that could be done to change/obscure the delimit sign.

5. What has happened to the change in the signage in Devizes directing HGVs down the A342 and the A345. As a corollary to this, the A342 has been 'repaired' somewhat by the road edges and at the junction of the A342 with Rushall. Since the insistence that these 12 wheeled overweight vehicles must use these routes the repairs which were carried out are now totally decimated and worse than they were before. A total waste of money and for once it would be helpful if Highways listened to

the folk who have to live with this on a daily basis. The changes to the signage have been carried out (confirmed by Mark Stansby). The road from Nursted to Rushall is due to be resurfaced some time in February.

I do believe that we have done the right thing by getting the limit down, but it isn't appropriate to have sanctioned so short a distance and it doesn't even take into account the very dangerous bend close to the Conock turn off where there have been two fatalities and numerous accidents - I don't understand the logic of not including that bend and it would be to the benefit of our villagers and the drivers to include the limit up to the first sign for Urchfont which is just beyond the bend and the Conock turn-off. See answer to 2. Above.

**1594 – Commuter Parking at The Knapp, Great Bedwyn – Action: The views of Cllr Wheeler be sought as 6 months have passed since the white lining was installed.**

2469 Request for Stop Sign at Cross Hayes, Wilcot - Highways have been to the site to check the sightline distances from both of the side roads. They have assumed an 85 percentile speed on the through route as 50 mph although this is probably an exaggerated figure. For Stop signs to be considered the maximum sightline distance from the side roads would be less than 70m. On the southbound approach drivers can see in excess of 70m in both directions and there are no particular concerns. However, on the northbound approach, where seemingly most of the overshoots have occurred, visibility to the right is good at over 70m but the left sightline is currently reduced to 55m. This could easily be resolved however by clearing away vegetation. A sightline of over 70m is achievable. Given the findings of the survey, it would be inappropriate to request Secretary of State approval for Stop signs, which are likely to be refused. On the positive side, it was noted that the Give Way signs and advance give way signs are all in good order but the road markings require refreshing and of course the vegetation needs some attention. Mark has asked Paul Bollen to action this work at the earliest opportunity.

In the meantime, the site will appear on the Collisions Cluster list for 2013/14 for further investigation and the findings will be reported to Pewsey CATG.

Terry said that he had asked Paul to ask the parish steward to clean the roads so the lines are visible, but this not been done.

It was agreed to close this as an area board issue as it is being looked at separately re collisions. **Action: Recommend to the area board to close issue number 2469, stop sign at Cross Hayes Wilcot**

2479 Large vehicles mounting pavement and hitting a residential wall in Rushall – Mark produced some drawings of signage improvements and confirmed that highways can fund from minor improvements budget – **Action Colin to discuss with PC and liaise with Mark.**

2603 – Lack of street light on railway bridge Great Bedwyn, speeding and lack of safety barriers. The safety audit has been done and there is potential for footway construction and improved street lighting – the station is well lit which makes the street looks poorly lit and pedestrians may feel vulnerable. The engineer who did the audit is experienced, and he felt there are some issues but most people are familiar with the road. **Action: It was agreed to send the report to the parish council and in the meantime Spencer would score it so it could be prioritised by CATG if Great Bedwyn PC wish to pursue.**

2700 lack of street lights near Pewsey Station on A345 – waiting for prices. It was felt that the pedestrian access study may recommend lighting improvements so it was agreed to wait until we have this.

2742 request for red surface patching at East Grafton. Mark confirmed that this has been put onto next year's programme. There has not yet been a formal request for support for white gates.

**6. Any other Business**

Colin referred to his request to Paul Bollen for friction checks on the Rushall to North Newton Road which is slippery when wet and there doesn't appear to be any oil on the road. **Action: Caroline to check with Paul.**

Richard asked Vince if the parking can be enforced opposite St John's Church Pewsey. Vince said that there is no obstruction, and there are no yellow lines there, so it can't be.

Next meeting 17 April 2pm Parish Office



**Area Board Issues 21/02/2013 10:00:34**  
**Issue Location: Pewsey Community Area**

ID	Division	Summary of Issue	Status
2818	Vale	Cars parking on Canal Bridge at Wilcot	Parish Councils can request waiting restrictions – guidance supplied. Police cannot cone areas but organisers can request cones from Wiltshire Council. A fee is charged for this service. Closed as an area board issue.
2786	B&B	Request for dropped kerb on the western side of High Street opposite The Old Bakery Burbage	This will be raised at the next CATG meeting
2783	B&B	New fencing required at Seymour Pond, Burbage	This will be discussed at the next CATG meeting
2778	Vale	Narrowing of bridge at Manningford since bridge repairs	This is being investigated
2742	B&B	Speeding through East Grafton	The red patching has been put into next year's programme. A formal request for financial support for white gates has not yet been made - parish council are looking at types/costs. CATG policy is to add areas that do Community Speed Watch (CSW) to SID rota, so once CSW is operating this location will be added
2721	Vale	Request for 20mph limit in Broad Street Woodborough	Pending the release of Wiltshire Council policy on 20mph limits
2700	Pewsey	Lack of street lights near Pewsey station on A345	Waiting for costs for new light - CATG suggests waiting for feasibility study for pedestrian access to station as this may form part of the recommended solution.
2603	B&B	Gt Bedwyn Lack of street light speeds in excess of 20mph limit and barriers not reinstated	The fence is being replaced by Network Rail. A safety audit has been carried out and the results sent to the parish council for their comments in the first instance.
2489	Vale	Speeding through the village of Oare	The school has made a bid under the Taking Action on School Journeys Challenge to investigate ways of making the route to school safer. The Feasibility Study has been done and the highways department will consider implementation for the 2013/14 financial year. The likelihood of implementation depends in part on the number and cost of other schemes being considered, and budget levels. This location is on the SID rota
2469	Vale	Dangerous junction at Cross Hayes, Wilcot	Vegetation and lining will be dealt with - a stop sign would not be permitted as the maximum sightline distance has to be less than 70m. This site is on the collision cluster list for 2013/14 for further investigation and findings will be reported to CATG.

2431	B&B	Request for Dropped Kerb The Knapp Great Bedwyn	This will be carried out with funding from the Trans Wilts LSTF bid.
2202	B&B	Speeding in Burbage	Volunteers being sought for Community Speed Watch; on the rota for SID; Parish Council looking to install 4 sets of village gates
2142	Vale	HGV Diversion Signs in Devizes	CATG have requested a freight assessment on the A342 Chirton and A345 Rushall - the signs have been changed to ensure that only high sided vehicles are directed along the A342. The A342 from Nursteed, Devizes, to Rushall is due to be resurfaced in February.
1964	Vale	Footpath at Grey Flags, Upavon	CATG has agreed to contribute to this scheme subject to approval by the area board.
1931	Pewsey	Footpath needed from Sunnyside Lane towards Prospect	This is on the CATG list
1884	Pewsey	Footpath between Prospect and the French Horn	This is on the CATG list
1723	Vale	Speeding through Alton Priors	Parish Council undertaking Community Speed Watch. Area is on the list for twice yearly SID. Issue raiser still concerned - have asked NPT to carry out speed checks (01/06/12)
1605	Vale	Parking problem outside Chirton School	The parish council and school are working on a new travel plan
1594	B&B	Problems with commuters parking in residential area The Knapp Great Bedwyn	Advisory access protection and disabled parking bay road markings have been in place for over six months and are being reviewed for their effectiveness
538	Vale	Speeding on the A342 and through Chirton	The stretch of A342 through Chirton has been reduced to 40mph. A speed survey concluded that the level of speeding through the village is below the threshold for community speed watch. The Police carried out speed checks on the A342 and found no evidence of speeding.
535	Vale	Increasing volumes of traffic using C52 (Manningford) as a rat run	Manningford Parish Council representatives attended the last CATG meeting where a number of options were discussed. It was agreed that a survey would be done by the parish council to get some data and a number of pinch points may be considered. Survey to be carried out in Spring 2013.
91	Vale	Traffic Calming/pavement in Rushall	Phase I complete - issue remains on CATG priority list until funds are available
72	Pewsey	Pedestrian Access to Pewsey Station	Pewsey Area Board have contributed Â£5,000 towards a feasibility study matched with Â£5,000 from the Trans Wilts LSTF Bid
2479	Vale	large vehicles mounting pavement and hitting a residential wall in Rushall	This matter is being dealt with between Highways and the Parish Council and is being funded from the minor improvements budget

## PEWSEY AREA BOARD – Forward Plan

Please note: This is a working document which is subject to change due to availability of relevant officers/partners and relevant timescales.

Date	Cabinet Member Attending	Location	Provisional Agenda Items	Other events/items
8 July 2013		Coronation Hall, The Green, East Grafton, SN8 3DB	<ul style="list-style-type: none"> <li>Election of Chairman and Vice Chairman</li> <li>Appointment to Working Groups and Task Groups</li> <li>Understanding Autism – To inform the Board of new duties in relation to people with autism and aspergers and how localities can respond</li> <li>Asset Management Strategy – The Council is designing an overarching Asset Management Strategy that will set out how it will lead in building resilient communities, including partners and engaging local communities. This will focus on developing campuses and employment around which plans will be developed</li> </ul> <p>Standing items including Updates and Community Area Grants.</p>	Report to Area Board A short film (10 mins) then interactive discussion
Mid to late 2013		<u>Display stand</u>	<ul style="list-style-type: none"> <li>Fire Authority Integrated Risk Management Plan (Business Plan) - To inform the Area Board of the Risk Management Plan and to hand out copies</li> </ul>	Not a main agenda item. Reference to be made during usual update. A link to the document to be included in the agenda

				papers or CAN. Table top display during the networking session at the beginning of the meeting. Hard copies to be made available at the meeting.
--	--	--	--	---

Community Area Manager: Caroline Braley ([caroline.brailey@wiltshire.gov.uk](mailto:caroline.brailey@wiltshire.gov.uk)) / Democratic Services Officer: Sharon Smith ([sharonl.smith@wiltshire.gov.uk](mailto:sharonl.smith@wiltshire.gov.uk))  
Service Director: Ian Gibbons ([ian.gibbons@wiltshire.gov.uk](mailto:ian.gibbons@wiltshire.gov.uk))

**Updated: 27 February 2013**